

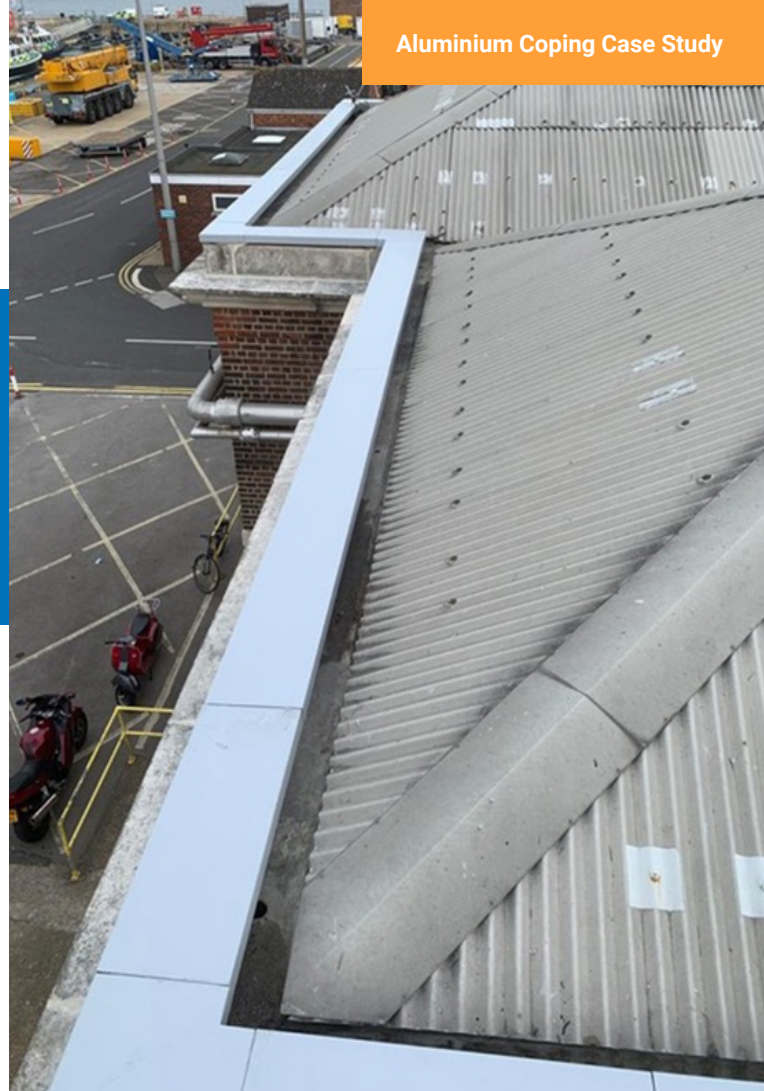
Project Date & Location

April 2021

HMNB (Naval Base) Portsmouth

Specification

- 70 linear metres of aluminium coping in Metallic Silver 9006m
- Marine coating required, which is a powder coat at a minimum of 40-50 microns on average to withstand the corrosive atmosphere and salts in a coastal environment.
- Parapet Maximum wall thickness 270mm



Solution

Alumasc Skyline aluminium coping SL30, 362mm overall width, suitable for a wall thickness up to 300mm wide.

Description

Contractor needed a quick solution to cap the existing parapet with a weatherproof covering and at the same time, improve the aesthetic of the building, with smooth clean lines.

The skyline coping system fitted the bill, with its unique fixing method which does not penetrate the skyline coping, whilst still allowing ventilation over the top of the wall.

Contractor

Northport Construction Services LTD

Supplied by the team at Gutter Centre on a 10-working day lead-time